

The Cost of Juvenile Justice

A Case Study Scenario

Christine Henningsen, Nebraska Youth Advocates

Juliet Summers, Voices for Children in Nebraska

Common values

As youth advocates, we work toward improving the lives of every kid.

As Commissioners, you know that every kid in Douglas County is also your responsibility.

The juvenile justice system should be driven by:

- Efficiency
- Usefulness
- Commitment to every child thriving

Overview of the Project

- Goal: To identify real monetary costs of a typical juvenile justice case in Douglas County, Nebraska
- Process: Over the course of more than a year, we met to identify
 - Three hypothetical average cases
 - System players and processes
 - Salaries and costs
 - Research on best practices
 - Recommendations for system improvement

Areas for Improvement/Potential Reform

The juvenile justice system is expensive, both in time and money.

We can improve by...

- Reducing number of filings (especially low-level)
- Eliminating racial and ethnic disparity
- Decreasing length of time in the system
- Decreasing time in detention and out-of-home care



53%

Percent of low to moderate-risk youth on probation³

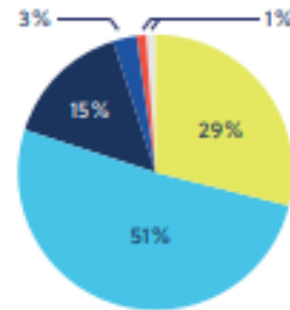
Average Length of Time from Case Filing to Termination

11.3 MONTHS

Delinquency offenses⁵

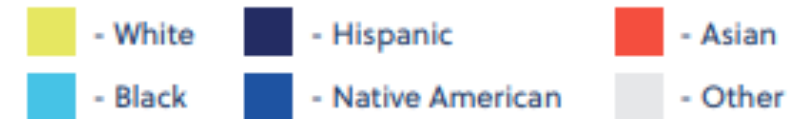
13.6 MONTHS

Status offenses⁵



1,194

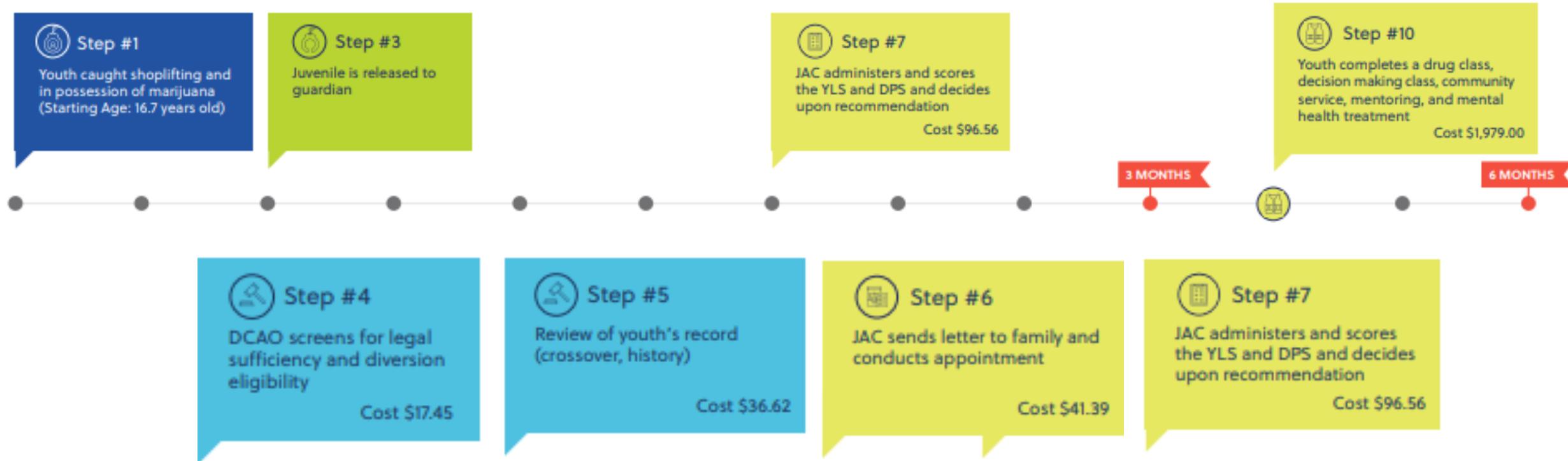
Number of youth detained^{4,6}



INTERACTIVE PDF AVAILABLE ONLINE

https://voicesforchildren.com/wp-content/uploads/2019/02/Cost-of-JJ_Interactive-01.31.19.pdf

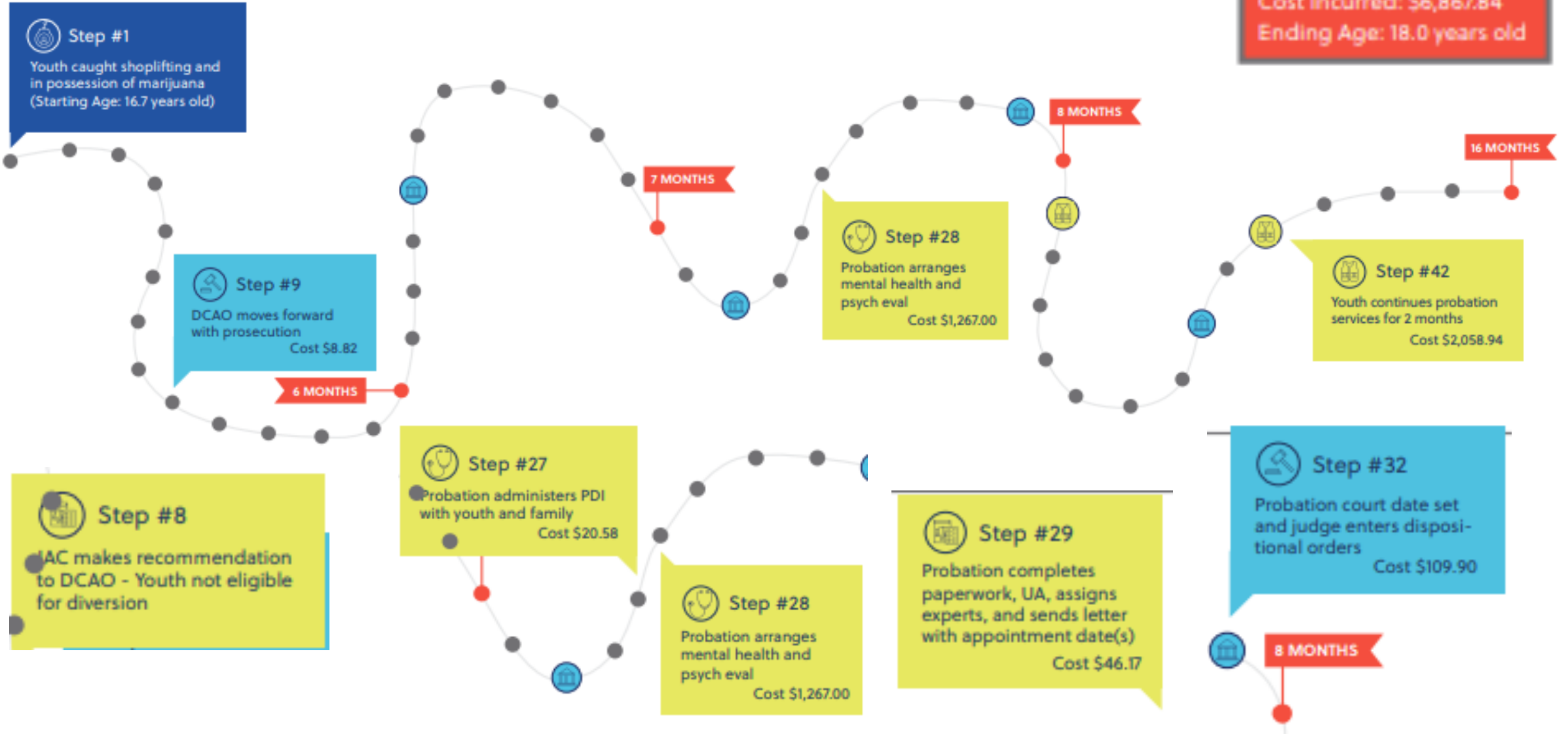
Scenario A: The Fast Track



Scenario A Summary
Time in System: 6 months
Time in Detention: 0 days
Cost Incurred: \$2,244.62
Ending Age: 17.2 years old

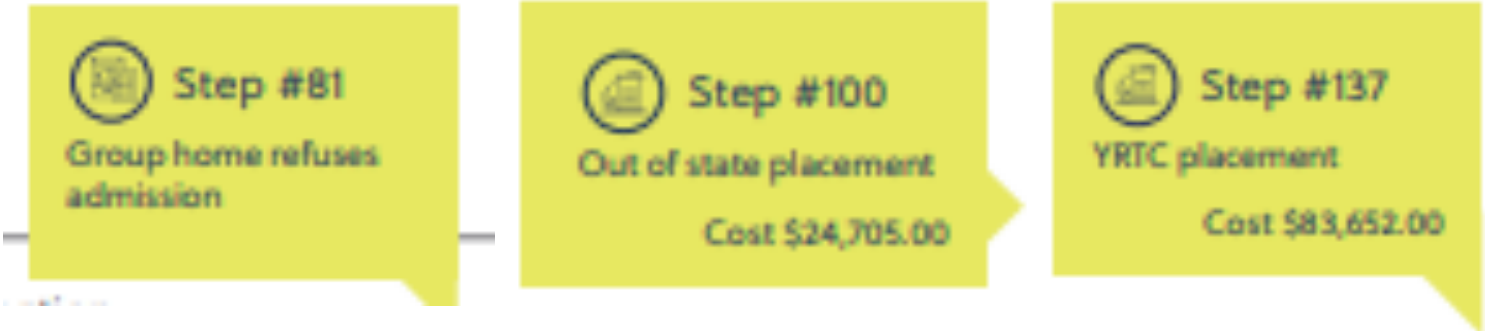
Scenario B: The Juvenile Court Case

Scenario B Summary
Time in System: 16 months
Time in Detention: 0 days
Cost Incurred: \$6,867.84
Ending Age: 18.0 years old



Scenario C: The Complex Case

Scenario C Summary
Time in System: 29 months
Time in Detention: 211 days
Cost Incurred: \$209,338.57
Ending Age: 19.0 years old



	Scenario A	Scenario B	Scenario C	Community-based services, family support, individualization, intensive outpatient counseling and substance abuse treatment, classes, etc.
Scenario A	\$1,979.00	\$3,358.94	\$5,804.17	

	Scenario A	Scenario B	Scenario C	Residential care, group home, or YRTC
Scenario A	\$...	\$...	\$124,152.00	

What can the Board do?

- Budget/appropriations
- Coordinated, early response
- Explore interactive PDF