



DOUGLAS COUNTY YOUTH CENTER

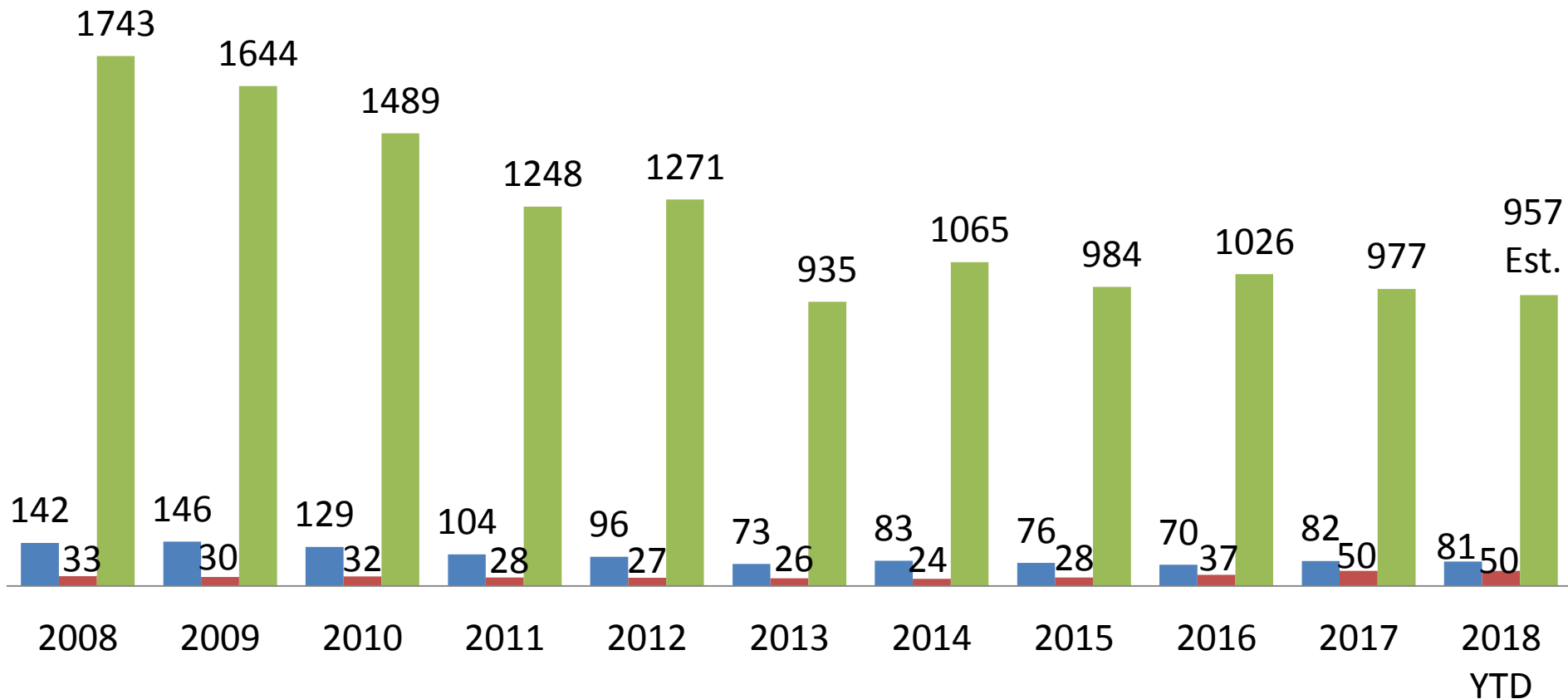
September 2018
PRESENTATION FOR
THE DOUGLAS COUNTY
ADMINISTRATIVE SERVICES COMMITTEE

MISSION STATEMENT

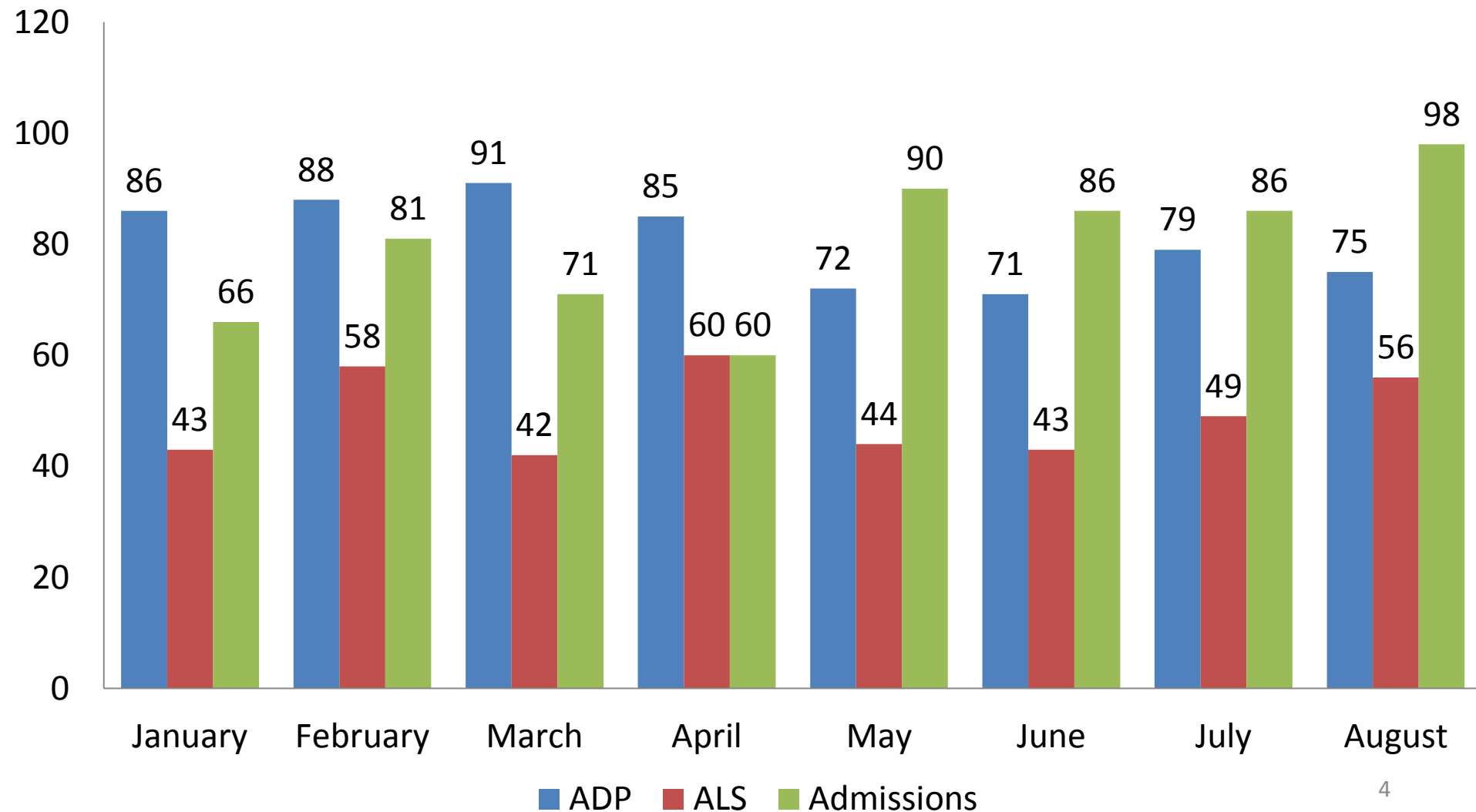
“To protect the interest and safety of the community by providing a secure, safe and structured environment for youth and to offer the necessary educational and developmental resources to a culturally diverse population of young people in detention, staff secure and in the community.”

Average Daily Population (ADP); Length of Stay (ALS); Admissions

■ ADP ■ ALS ■ ADMISSIONS

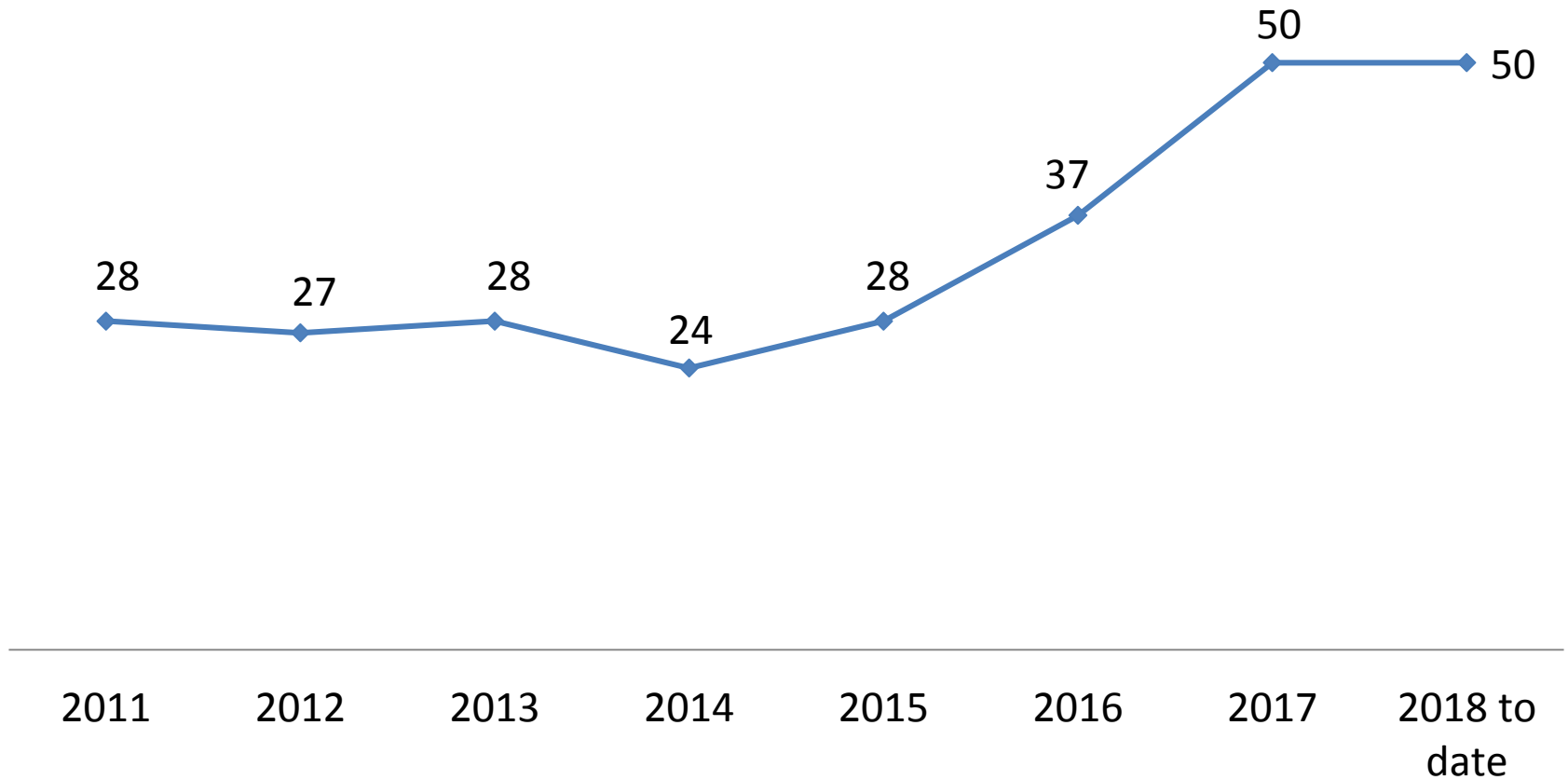


2018 Monthly Average Daily Population (ADP); Length of Stay (ALS); Admissions

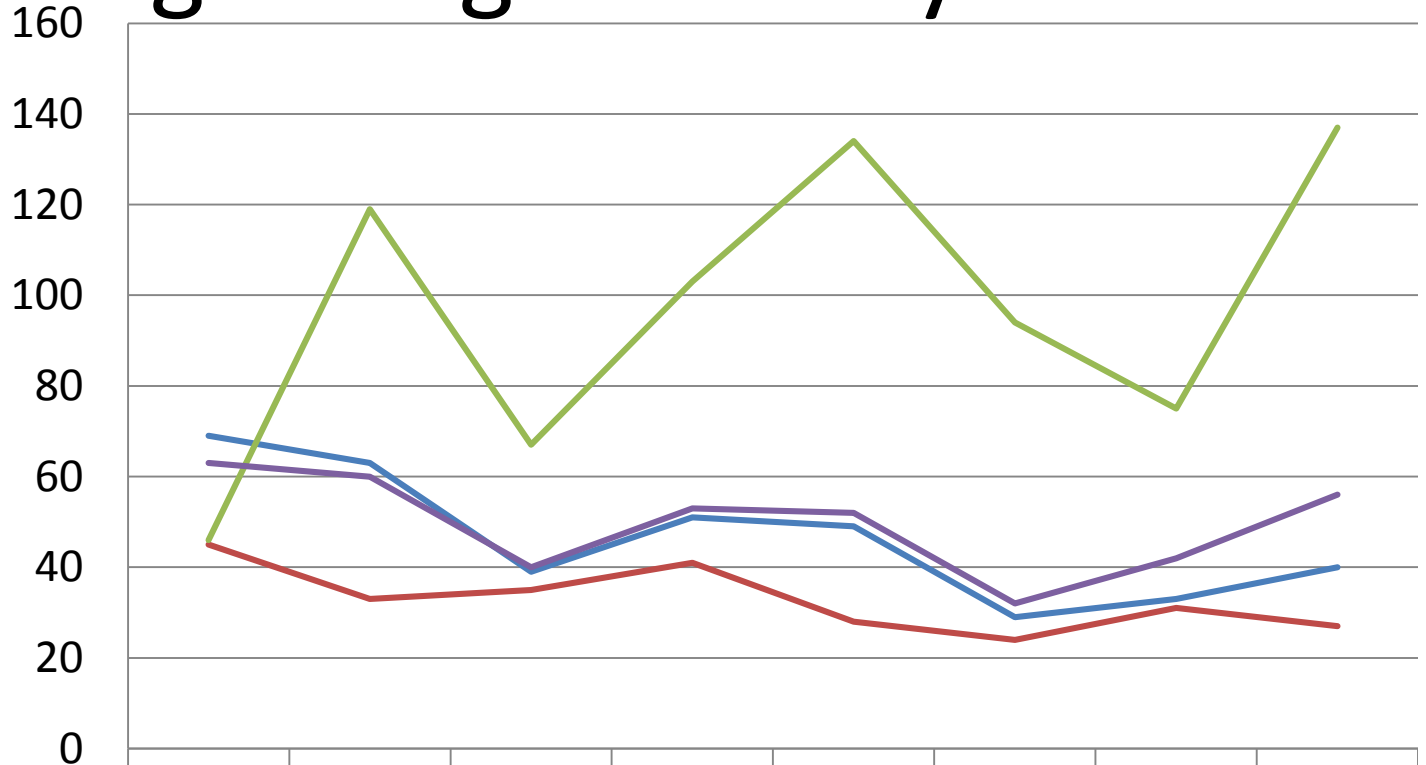


Average Length of Stay

Note - 2015 – Removed detainees that stayed less than 24 hours from the ALS
ALS increased by 35% from 2016 to 2017

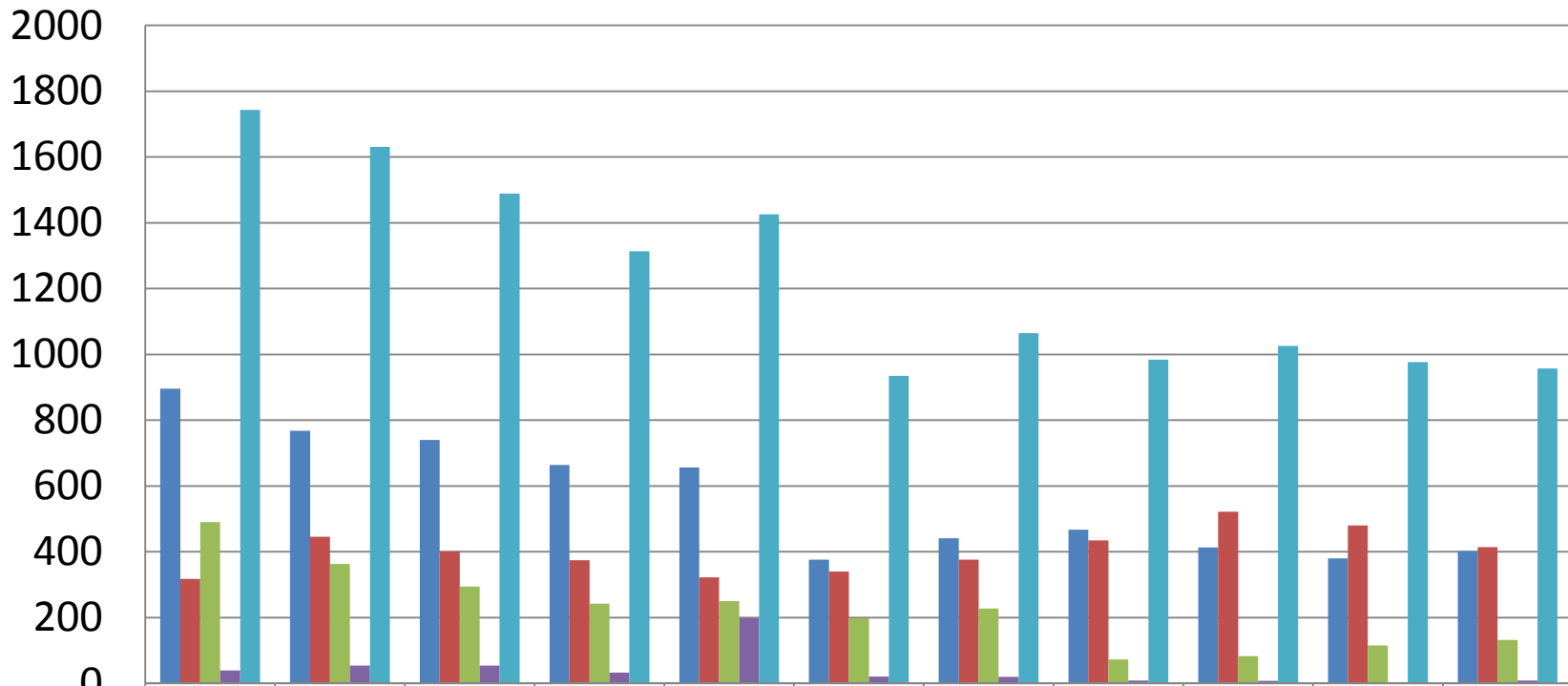


Average Length of Stay 2018



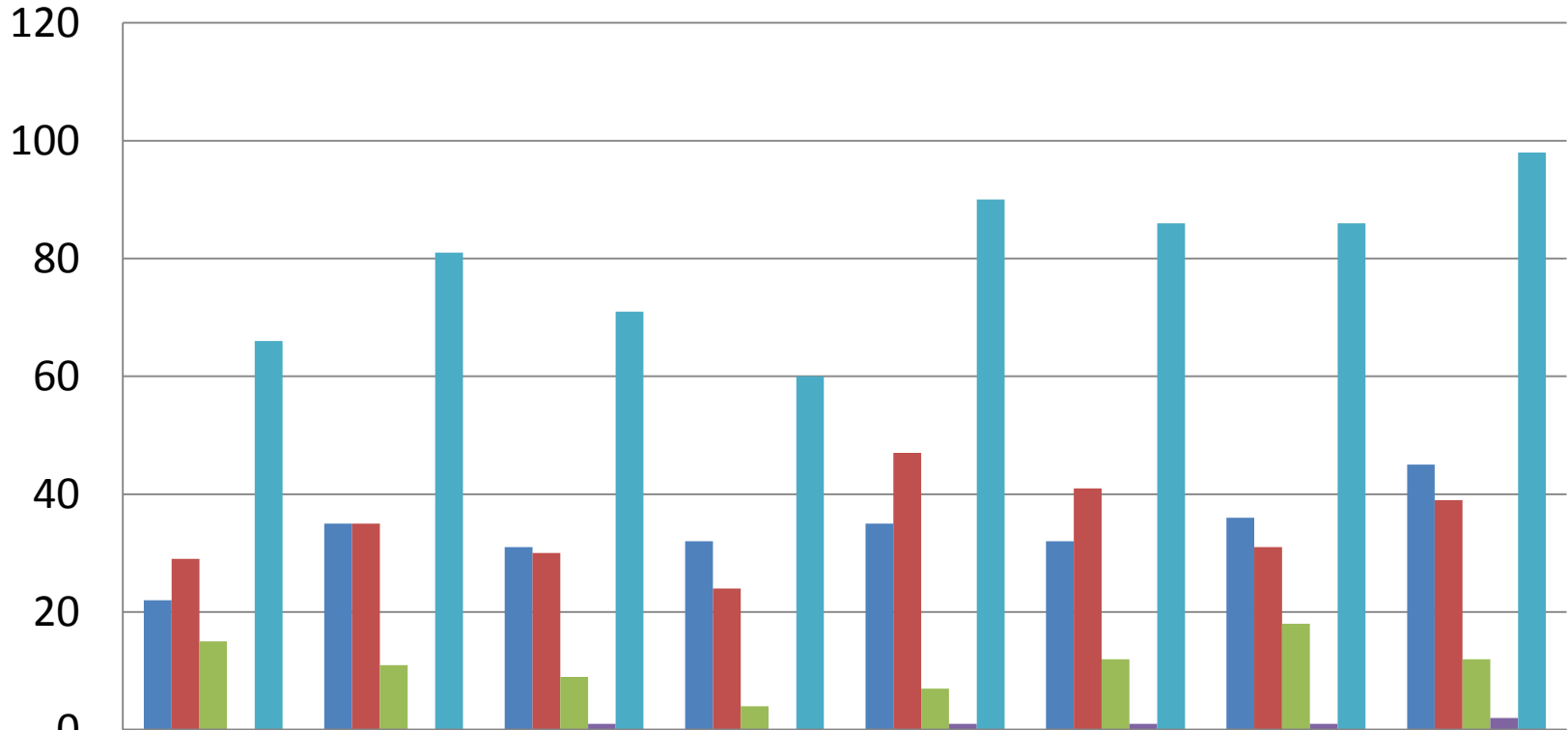
	January	February	March	April	May	June	July	August
ALS - Juvenile - not on probation	69	63	39	51	49	29	33	40
ALS - Probation	45	33	35	41	28	24	31	27
ALS - Adult Court	46	119	67	103	134	94	75	137
ALS - overall	63	60	40	53	52	32	42	56

Admissions 2008 - 2018



	2008	2009	2010	2011	2012	2013	2014	2015	2016	2017	2018 est.
Adjudicate	896	768	740	664	656	376	441	467	413	380	402
Pre-Adjudicate	318	446	401	374	322	340	376	435	522	480	414
Pre-Trial	490	363	294	242	250	198	228	73	83	115	132
Sentenced	39	54	54	33	198	21	20	9	8	2	9
Total	1743	1631	1489	1313	1426	935	1065	984	1026	977	957

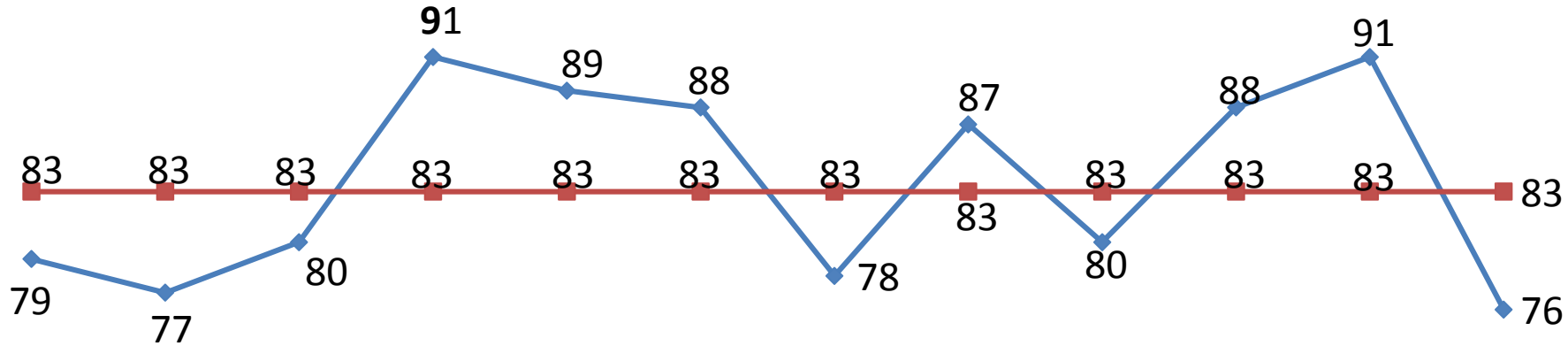
2018 Monthly Admissions



	Jan	Feb	March	April	May	June	July	Aug
Adjudicate	22	35	31	32	35	32	36	45
Pre-Adjudicate	29	35	30	24	47	41	31	39
Pre-Trial	15	11	9	4	7	12	18	12
Sentenced	0	0	1	0	1	1	1	2
Total	66	81	71	60	90	86	86	98

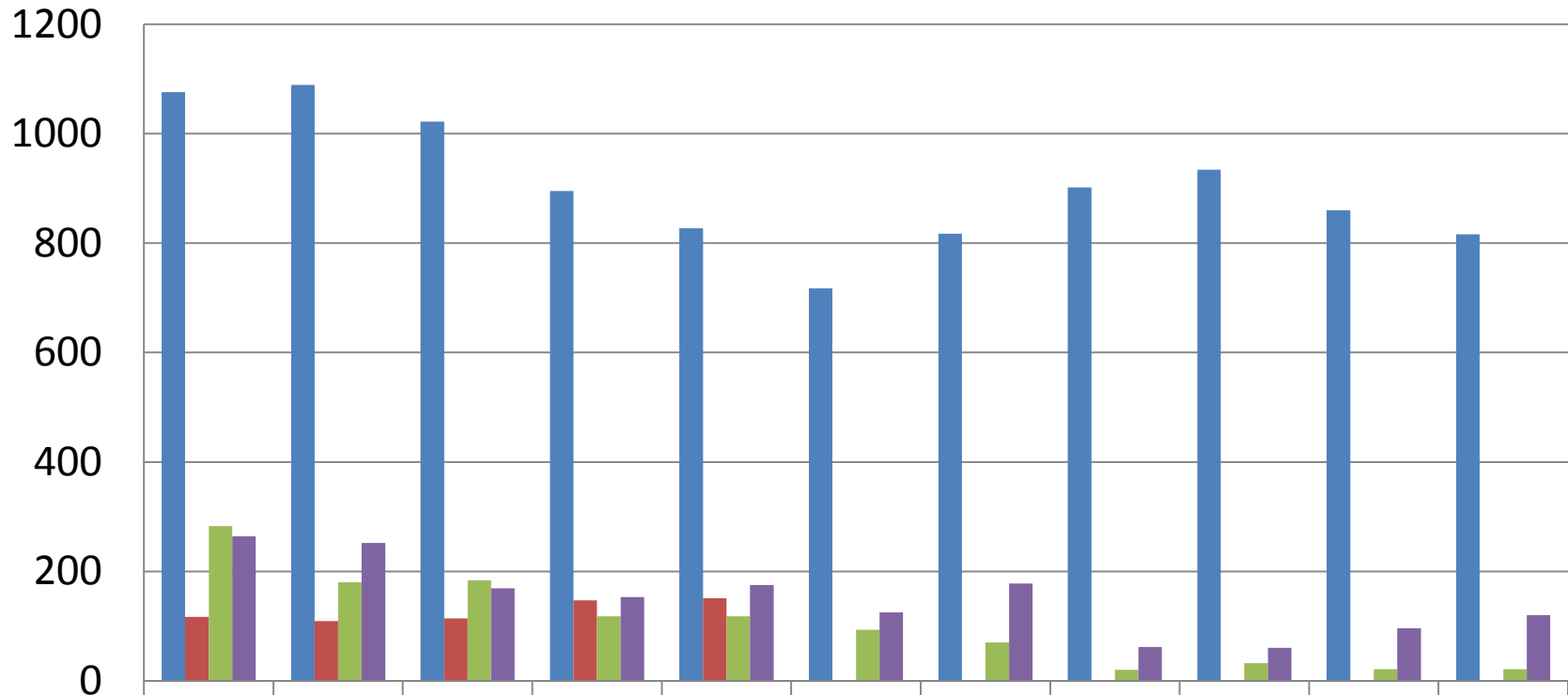
5 Year Average of Monthly Admissions

◆ 5 YR Average ■ Average



January February March April May June July August September October November December

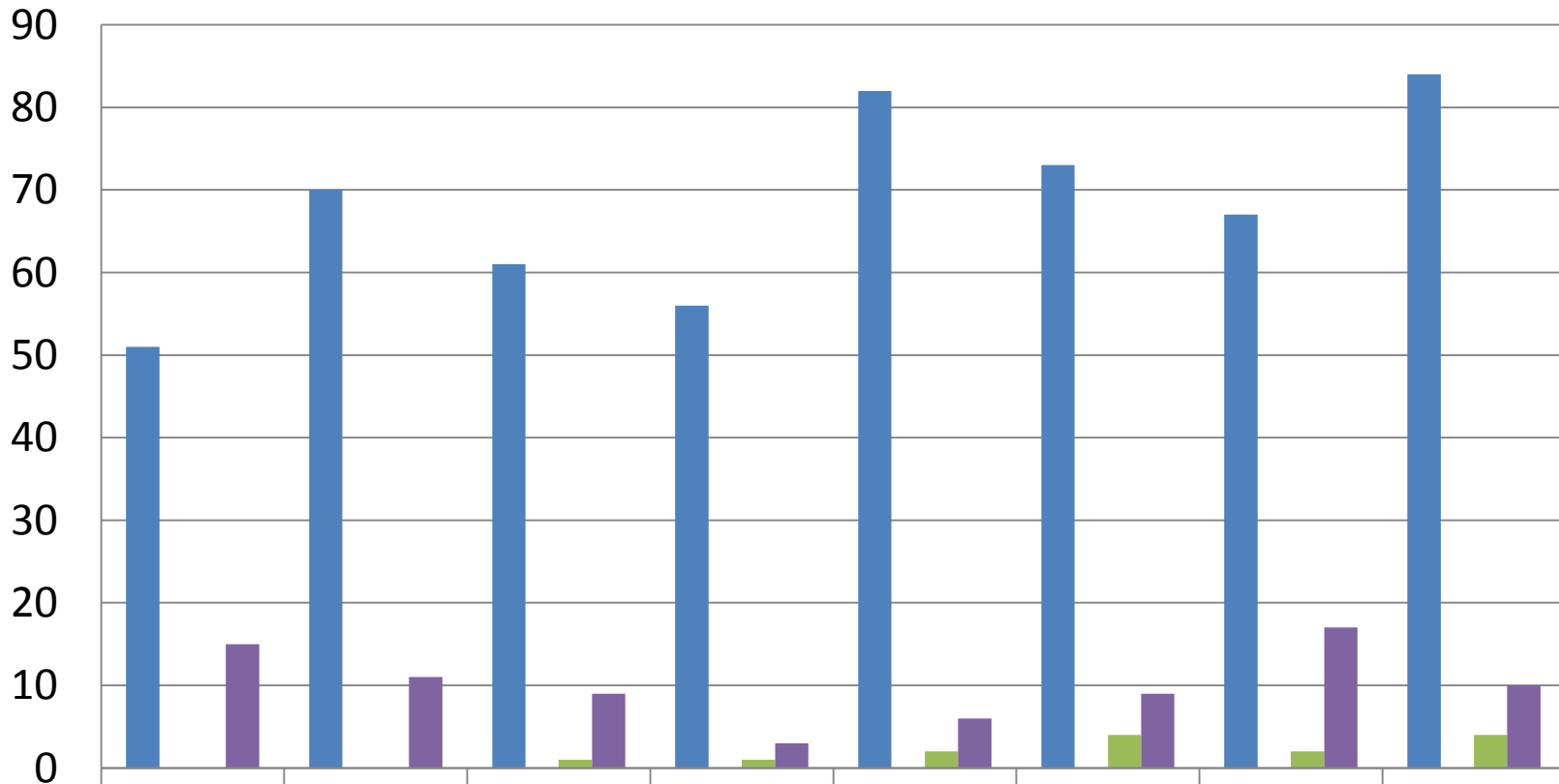
Classification at Admissions



	2008	2009	2010	2011	2012	2013	2014	2015	2016	2017	2018 - est
--	------	------	------	------	------	------	------	------	------	------	---------------

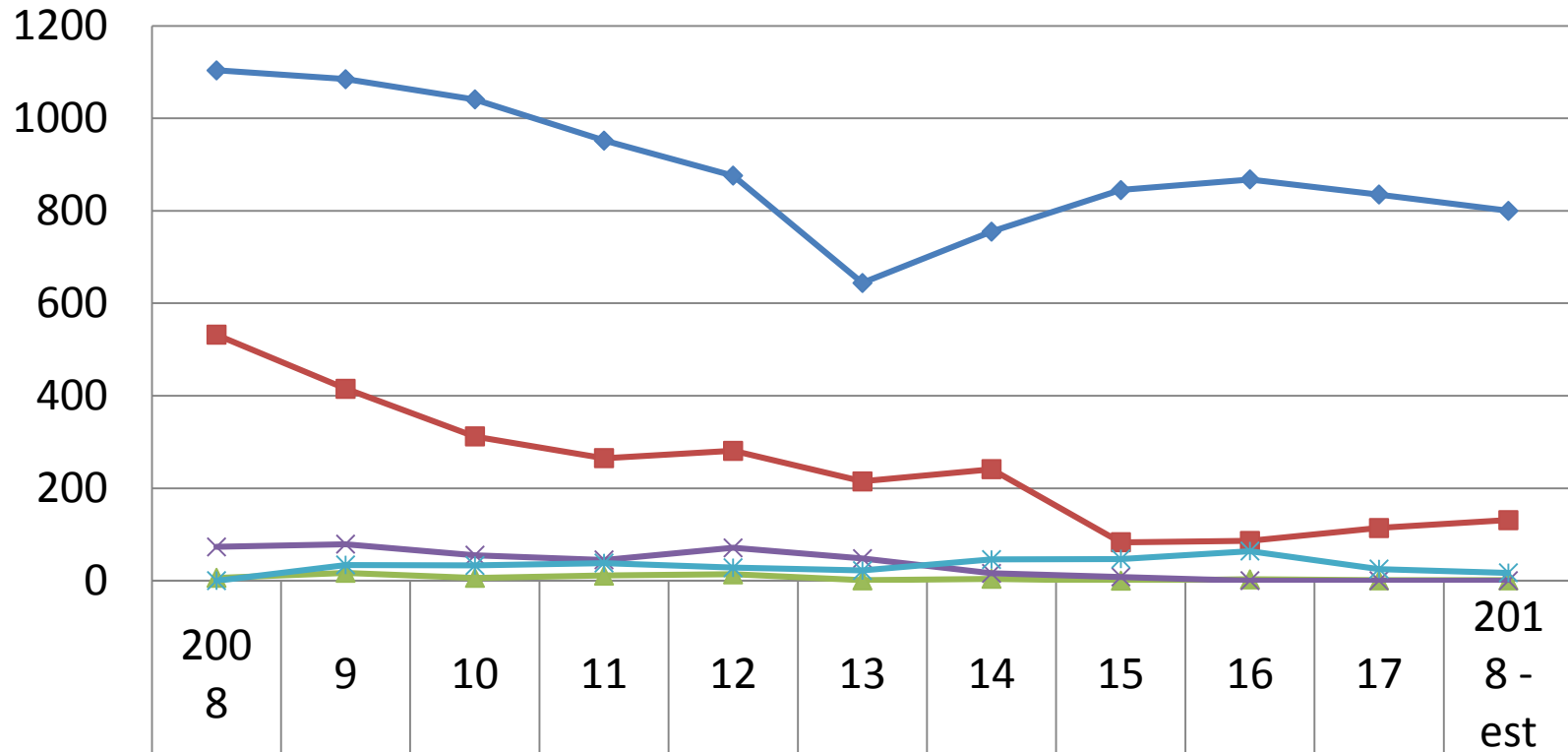
DELINQUENT	1076	1089	1022	895	827	717	817	902	934	860	816
STATUS	117	109	114	147	151	0	0	0	0	0	0
MISDEMEANORS	283	180	184	118	118	93	70	20	32	21	21
FELONY	264	252	169	153	175	125	178	62	60	96	120

2018 Monthly Classification at Admissions



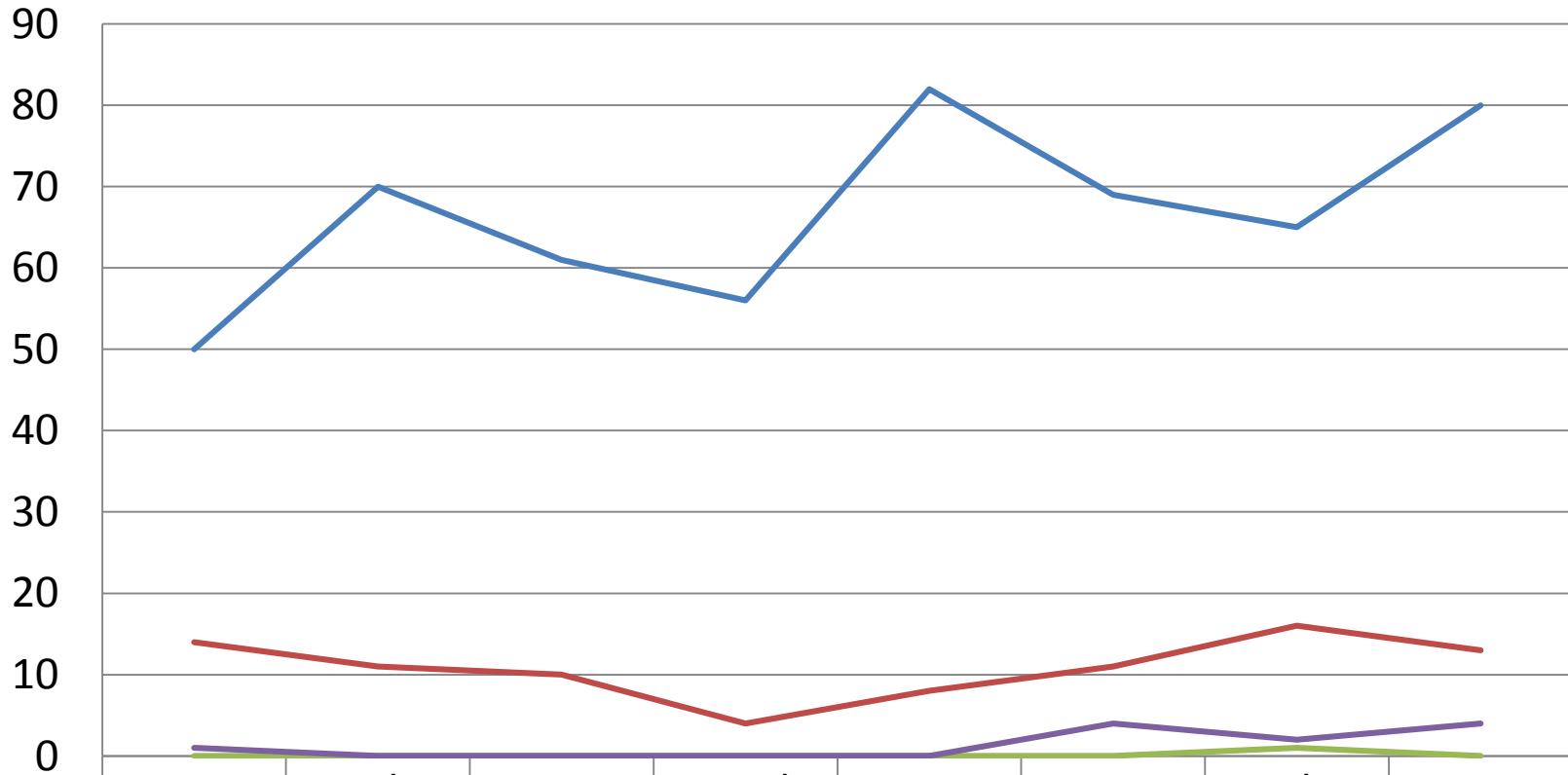
	Jan	Feb	Mar	April	May	June	July	Aug
Delinquent	51	70	61	56	82	73	67	84
Status	0	0	0	0	0	0	0	0
Misdemeanor			1	1	2	4	2	4
Felony	15	11	9	3	6	9	17	10

Court Jurisdiction at Admissions



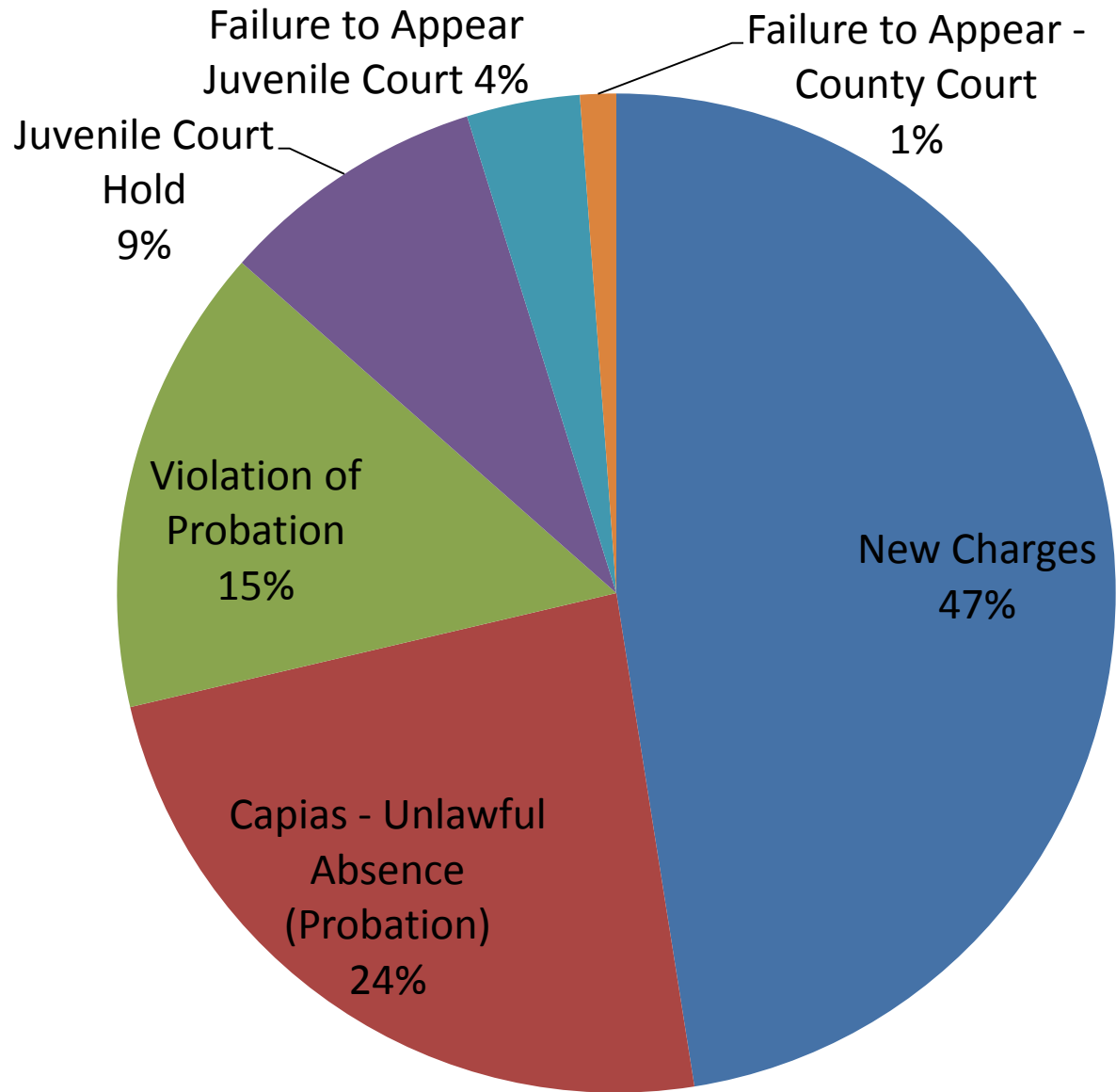
◆ JUVENILE	1104	1085	1041	952	876	644	755	845	868	835	800
■ COUNTY	532	415	312	265	281	215	241	83	86	114	131
▲ DISTRICT	6	17	6	11	14	1	4	0	3	1	1
✕ OFFICE OF JUVENILE SERVICES	73	79	55	45	71	48	16	8	0	0	0
✧ OTHER COUNTY	0	34	33	38	28	22	46	47	64	25	17

2018 Monthly Court Jurisdiction at Admissions

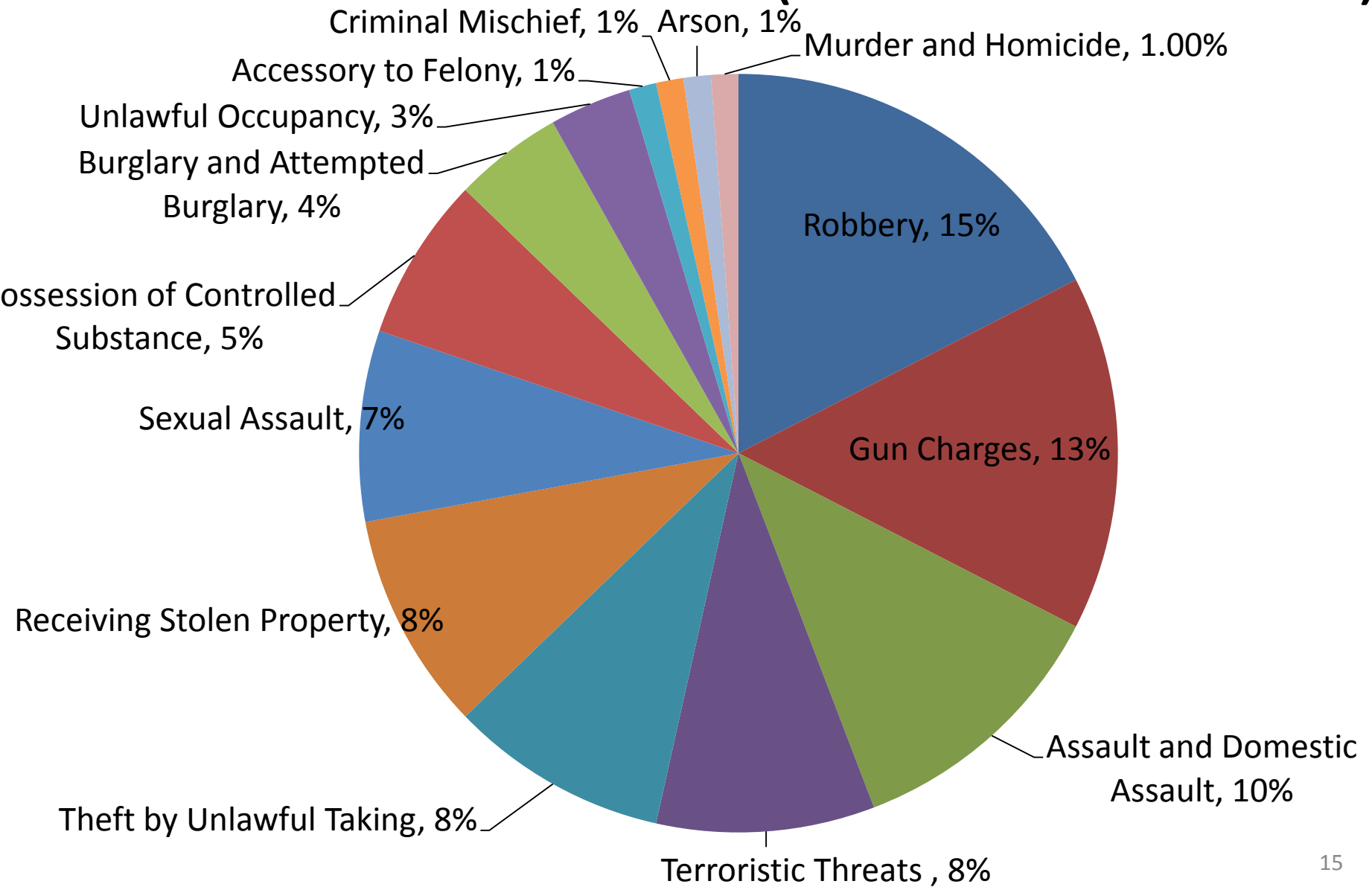


	Jan	Feb	Mar	April	May	June	July	Aug
Juvenile	50	70	61	56	82	69	65	80
County	14	11	10	4	8	11	16	13
District	0	0	0	0	0	0	1	0
Other County	1	0	0	0	0	4	2	4

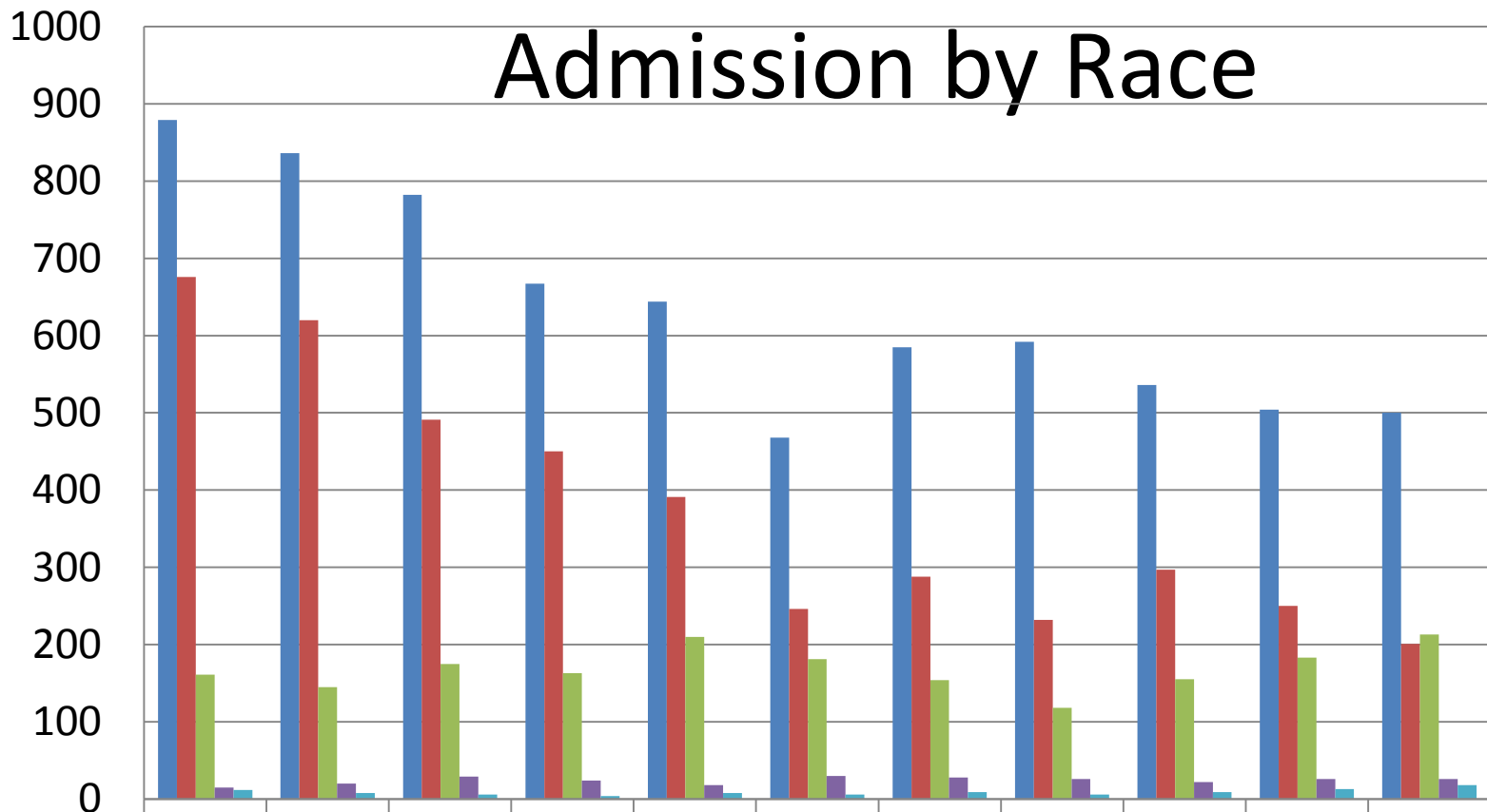
Reason for Admission 2018



New Charges – 14 Offenses Account For 84% of All Admissions (1-1-18 to 8-31-18)

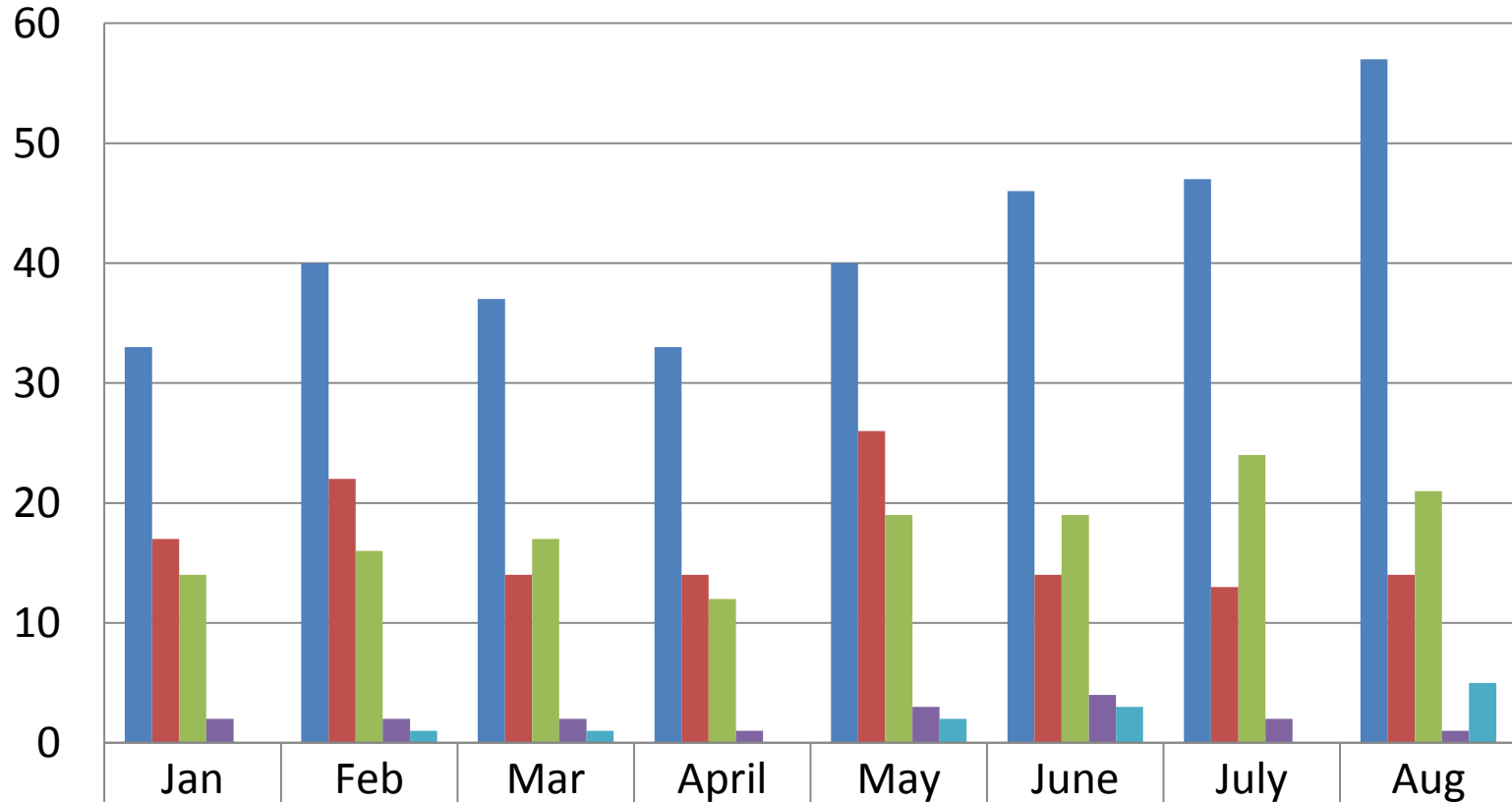


Admission by Race



	2008	9	10	11	12	13	14	15	16	17	2018
AFRICAN AMERICAN	879	836	782	667	644	468	585	592	536	504	500
CAUCASIAN	676	620	491	450	391	246	288	232	297	250	201
HISPANIC/MEXICAN	161	145	175	163	210	181	154	118	155	183	213
NATIVE AMERICAN	15	20	29	24	18	30	28	26	22	26	26
ASIAN	12	8	6	4	8	6	9	6	9	13	18

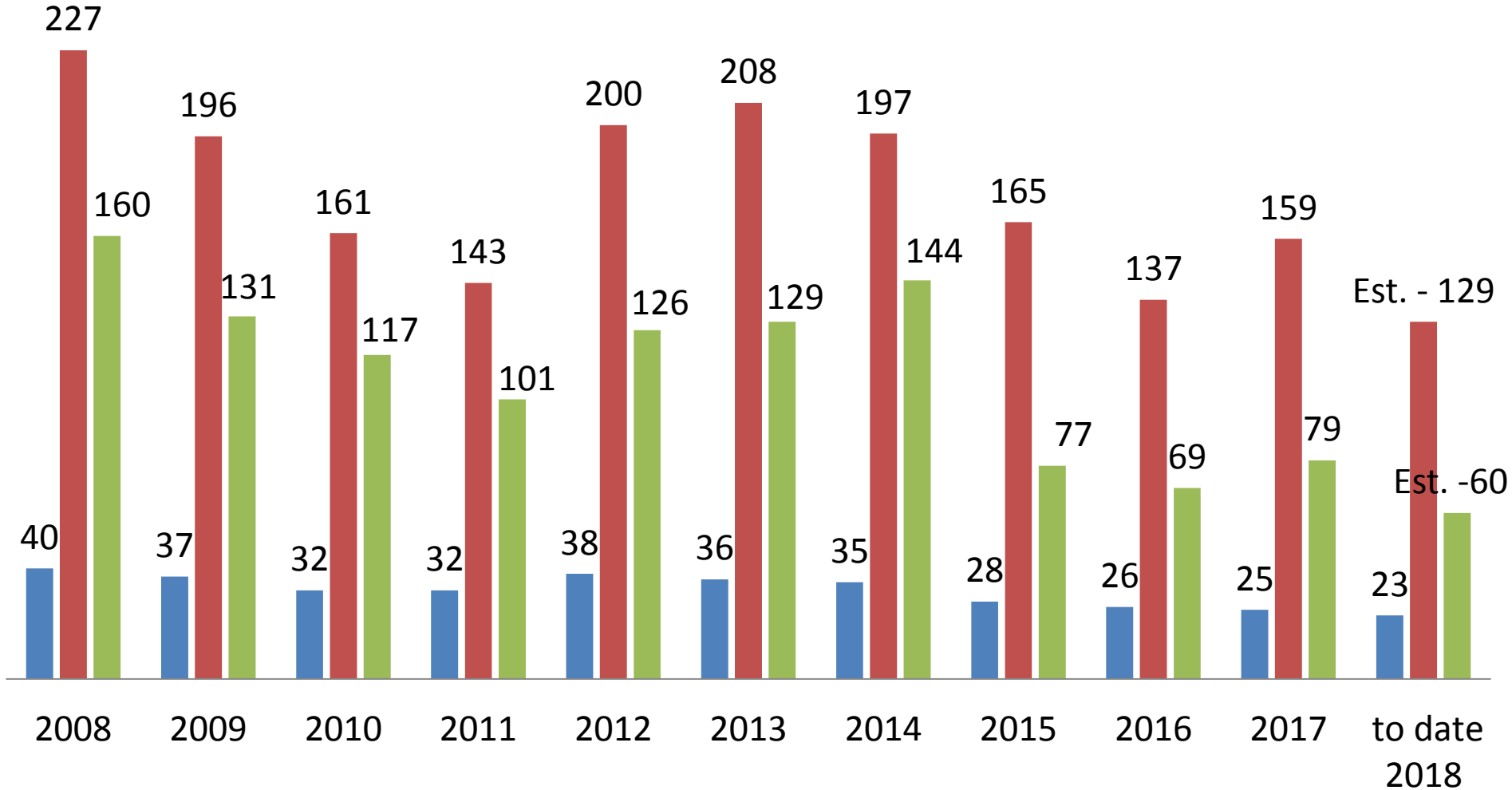
2018 Monthly Admissions by Race



■ African American	33	40	37	33	40	46	47	57
■ Caucasion	17	22	14	14	26	14	13	14
■ Hispanic/Mexican	14	16	17	12	19	19	24	21
■ Native American	2	2	2	1	3	4	2	1
■ Asian	0	1	1	0	2	3	0	5

HOME Program

■ ADP ■ Admissions ■ Successful completions





Student Art in Hallway



Parent/Student Visitation Center

Feedback?
Questions?
Suggestions?